

# Steele County, ND

Westfield Township

# Farm Retirement & Land

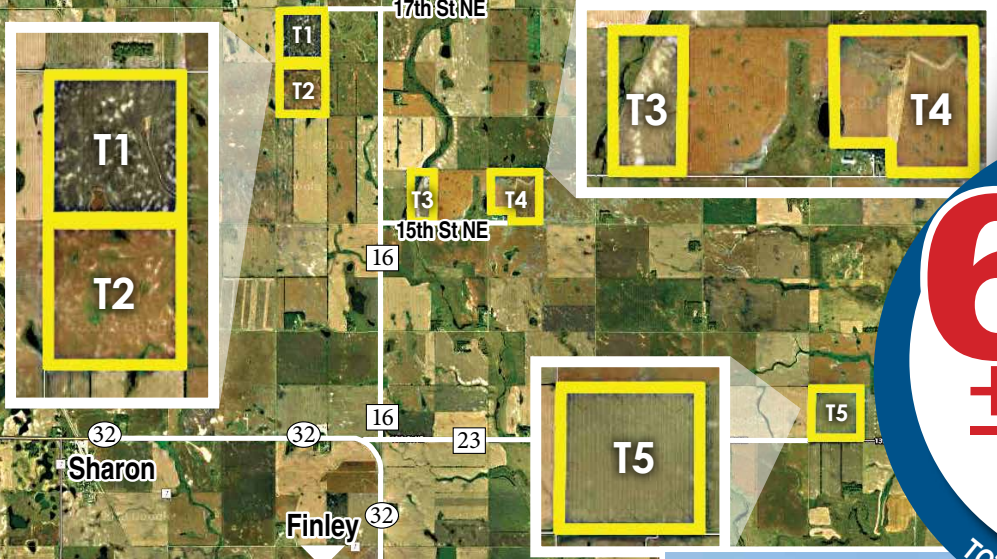
# AUCTION

Thursday, November 1 @ 11AM 2018

AUCTION LOCATION: Sharon Community Building, 303 Main St., Sharon, ND  
 DESCRIPTION: W 1/2 7-148-56, E 1/2 of SW 1/4 17-148-56, SW 1/4 Less Farmstead 16-148-56, & SW 1/4 25-148-56

For a detailed Buyer's Prospectus with complete terms & conditions contact Max Steffes at Steffes Group, 701.237.9173 or 701.212.2849.

WEDNESDAY, OCTOBER 31 | 10AM 2018



**692**  
 ± acres  
 offered in  
 5 tracts

TOTAL CROPLAND ACRES: 665+

**AUCTIONEER'S NOTE:** Due to health reasons, Todd has decided to retire from farming and will be selling his machinery and land at public auction. The equipment will be sold on October 31st on the farm and the farm real estate will be sold the following day in Sharon. Major equipment begins selling at 10:30 AM. Live online bidding available on major equipment. Registration, terms, & details at SteffesGroup.com.

**Location: 12816 15th St NE, Sharon, ND 58277.**

From Sharon, ND, 3 miles east on ND-32, 2 miles north on ND-16, 1-1/8 mile east on 15th St NE. From Finley, ND, 8 miles north on ND-32, 1-1/8 mile east on 15th St NE.

Todd Ostenson, Owner



### TRACTORS

- 1997 John Deere 9400 4WD, 24 spd., 3 hyd., return flow, wired for air seeder, JD 200 ATU & wiring, rear suitcase & wheel weights, 710/70R38 tires, (3) years on New rear tires, (2) years on New greasable pins & bushings, 7,342 hrs., S/NRW9400H001839
- 1995 John Deere 8400 MFWD, powershift, 4 hyd., 3 pt., quick hitch, return flow, 1000 PTO, diff lock, 100 Series ATU, 14.9-30 front tires, 14.9R46 duals, 10,492 hrs., S/NRW8400P001487
- 1978 John Deere 4040 2WD, CAH, quad range, 50 Series cab, 2 hyd., 3 pt., quick hitch, 540/1000 PTO, JD 148 hyd. loader, New 7' bucket w/bolt on cutting edge, 60 Series step, rear wheel weights, New 11L-15.4-16 front tires, 18.4-38 rears, 10,180 hrs., S/N4040H001404R
- 1978 John Deere 2840 2WD, open station w/canopy, 8 spd, 2 hyd., 3 pt., quick tach, 540/1000 PTO, 16.9-38 tires, 5,033 hrs., S/N294009L

### COLLECTIBLE TRACTORS

- 1951 Farmhand M, wide front, Farmhand loader w/hay bucket & grapple, 13.6-38 tires, S/N256136
- 1951 Minnesota Moline U, wide front, rear wheel weights, 15-30 rear tires, S/N01212268
- 1950 John Deere G, narrow front, PTO, Roll-O-Matic, Powr-Trol, rock shaft, New Firestone 13.6-38 tires, S/N43591
- Allis Chalmers D15, wide front, 4 spd., 1 hyd., rockshaft, PTO, 13.6-26 tires

### GPS EQUIPMENT & RADIOS

- (3) John Deere ITC globes, SF1, S/NPCGT01C334875, S/NPCGT01C524990, S/NPCGT01C332467
- John Deere 1800 display, SF1, S/NPCGU18C267201
- John Deere 1800 display, no activations
- John Deere brown box w/processor, SF1 card
- John Deere brown box w/processor, SF2
- John Deere brown box w/processor, no card
- (10) Motorola business band radios, VHF programmable

### COMBINES

- 1994 John Deere 9600, 2WD, DAM, DAS, AHH, 3 spd. throttle, Vittoe twin chaff spreader, Maurer hopper ext., Firestone 18.4-38 duals, 14.9-24 rear tires, 4,189 sep. hrs., 5,634 engine hrs., S/NH09600X658128
- 1992 John Deere 9600, 2WD, DAM, DAS, AHH, 3 spd. throttle, Vittoe twin chaff spreader, Maurer hopper ext., Firestone 30.5L-32 front tires, 14.9-24 rear tires, 3,705 sep. hrs., 4,805 engine hrs., 1 season on all New tires, S/NH09600X646388

### HEADS & SWATHERS

- 1996 John Deere 930 flex head, 30', AHH, finger reel, 00/10 Series hookups, S/NH00930F666239
- 1997 John Deere 925 flex head, 25', AHH, finger reel, hyd. fore/aft, S/NH00925F671689
- 1994 & 1991 930 rigid heads, 30', bat reel, 00/10 Series hookups
- 1978 John Deere 222 rigid head, bat reel, 00/10 Series hookups, S/N324655
- 1991 John Deere 914 pickup head, 7-belt, wind screen, wide gauge wheels, S/NH00914B640205
- 1991 John Deere 912 pickup head, 6-belt, wind screen, wide gauge wheels, 00/10 Series hookups, S/NH00912B640245
- 1981 John Deere 210 pickup head, 6-belt, wind screens, 00/10 Series hookups, S/N485144
- 1979 John Deere 210 pickup head, 6-belt, wind screens, 00/10 Series hookups, S/N376267
- 1983 John Deere 853A all crop head, 8x30', 00/10 Series hookups, complete reconditioning
- 1982 Versatile 4400 self-propelled swather, CAH, Cummins diesel, Hydro, 25' draper, center delivery, 18.4-16 tires, S/N194825
- John Deere 590 pull-type swather, 25', bat reel, auto fold, 1000 PTO, S/NE00590A910098
- John Deere 590 pull-type swather, 21', finger reel, auto fold, 1000 PTO, S/NW00590X002298

### GRAIN CART

- Unverferth 8200 grain cart, 850 bu., 16" corner auger, Shurco electric roll tarp w/battery & remote, 1000 PTO, 30.5L-32 tires, S/NB19350102

### DRILLS & PLANTERS

- John Deere 737 air seeder, 40', 7" space, 3-section fold, full floating hitch, walking tandems across, single pt. depth, single shoot, carbide tips, 3" rubber press wheels, JD 1900 tow behind commodity cart, 270 bu., 2-compartment, hyd. fill auger, black/green/yellow rollers, SeedStar, brown box display, 3-bar harrow behind cart wheels, 66x43.00-25 tires, New control box & wiring, Air Seeder S/N H00737X670132, Cart S/NH01900H675418
- John Deere 9350 press drill, 24', (3) 8' sections, dry fertilizer, black press wheels, hyd. markers, Kuhn 25' drive over transport, rear steering
- John Deere 8350 drill, 12', dry fertilizer, rubber end wheel, w/grass seeder
- John Deere 7200 planter, 16x30", 2 pt., front fold, MaxEmerge II units, 3 bu. boxes, spring down pressure, (8) 75 gal. liquid fert. tanks, 2x2, JD monitor, hyd. markers, rebuilt ground drive squeeze pump, S/NA07200D500042
- John Deere 7000 pull-type planter, 8x30", dry fertilizer, JD monitor, hyd. markers, finger units, large/small bean cups

### SEED TENDER

- Seed Shuttle S5290 tandem axle seed tender, 2-compartment, 180 degree swing, Honda GX160 electric start motor, wireless remote, bumper hitch

### TILLAGE EQUIPMENT

- John Deere 960 field cultivator, 44-1/2', 6" space, 5-section fold, walking tandems across, single pt. depth, McKay knock-on 9" sweeps
- John Deere 1000 field cultivator, 32', walking tandems across, JD 3-bar harrow w/new teeth
- Summers culti-harrow, 60', 5-bar section, S/N93391
- Summers Superweeder multiweeder, 60', 3 rank S-tines, hyd. retractable, 1,000 gal. poly tank w/rebuild hyd. pump, 5-bar harrow, S/N0445
- Degelman LR7645 land roller, 45', 36" drum, S/N2720
- 1997 John Deere 635 tandem disc, 32', 9" space, 21" blades, rock flex, tandems across, single pt. depth, scrapers, S/NN00635X001811
- John Deere 235 tandem disc, 25', 9" space, rock flex, tandems on main, singles on wings, scrapers, S/N31377
- John Deere 680 chisel plow, 43', 12" space, 3-section fold, walking tandems across, full floating hitch, Summers 3-bar harrow, S/NN00680X003639
- John Deere 610 chisel plow, 35', 12" space, walking tandems across, Summers 3-bar harrow w/new teeth, no welds on frame
- John Deere 1600 chisel plow, 24', tandems across, rear hitch, 2-bar harrow
- John Deere 3700 spring reset plow, 10x18", 1 coult, on land hitch
- John Deere 3600 spring reset plow, 8-bottom, vari-width, set for 18", 1 coult, on land hitch
- John Deere A3100 6-bottom plow, pull-type, hyd. lift, kick back reset, S/N103146
- John Deere chisel plow, 12', single wheels John Deere C20 field cultivator, 18', manual fold wings, hyd. lift, less cylinder
- John Deere 845 row crop cultivator, 8x30', rolling shields

### SEMI TRACTORS & TRUCKS

- 1989 Kenworth T800 36" removable sleeper, tandem axle, 12.7 liter 60 Series Detroit, Eaton 9 spd., air ride, air slide 5th, diff lock, air load gauge, dual aluminum fuel tanks, 2-line wet kit, 208" WB, 11-22.5 tires on steel rims, speedo works intermittently, shows 506,730 miles
- 1988 Kenworth T600 tandem axle, NTC350 Cummins, Eaton 9 spd., spring susp., diff lock, Red River 18-1/2"x26" box & hoist, roll tarp, combo gate, rear controls, rear pintle hitch, air & electric, 285/75R24.5 tires on steel rims, aluminum fronts, 882.621 miles
- 1978 Chevrolet C60 single axle, custom deluxe cab, 366 gas, 4&2 spd., 15' box, hoist, 18" Hi-Rizer collapsible ext., combo gate, 9:00-20 tires, 92,882 miles
- 1958 Chevrolet Viking 60 single axle truck, 6 cyl., 4&2 spd., 13' steel box & hoist, 13,000 miles
- 1974 Ford F60 single axle grain truck, V8 gas, 4&2 spd., 15' steel box & hoist, 8.25-R20 tires, 93,339 miles

### PICKUPS

- 2009 Chevrolet Silverado LT 1500, crew cab, Z71, 5.3 liter, automatic, 4WD, tow pkg., running boards, Leer fiberglass topper, 265/65R18 tires on aluminum rims, 243,000 miles
- 1998 Chevrolet Silverado 1500, ext. cab, Z71 pkg., 6.5 liter turbo diesel, automatic, 4WD, 6-1/2' box, tonneau cover, tow pkg., 265/75R16 tires on aluminum rims, 293,671 miles
- 1995 Chevrolet Cheyenne 3500, reg. cab, 6.5 turbo diesel, automatic, 4WD, 9' steel flatbed w/5th wheel ball, tow pkg., 225/75R16 duals, 153,093 miles

### TRAILERS & HOPPER TRAILER

- 2010 Timpler Super Hopper tandem air hopper bottom, 40'x96"x72", ag hopper, electric roll tarp w/remote, air scale, 11-24.5 original virgin tires on aluminum rims, single owner
- 1974 American pup grain trailer, 20'x60", single hopper, 18" Hi-Rizer collapsible ext., turn table front, LED lights, rebuilt turn table, hitch, brakes & susp., 275/80R 22.5 on New aluminum pilot rims
- 1983 Great Dane dry van tandem axle slider, 48'x96", spring susp., swing doors 11R22.5 on steel
- Steel flatbed trailer, 40'x96", tandem slider, spring susp., (2) 1,600 gal. poly elliptical tanks, (2) 30 gal. mix cones, New Pacer 2" transfer pump w/B&S 208cc motor, 2" plumbing, F&S 3" electric hose reel, stainless steel swivel 75'x3" hose

### SPRAYS

- 1998 John Deere 4700 self-propelled sprayer, 90' booms, 800 gal. SS tank, 5-way nozzle bodies, JD 200 Series ATU & wiring, hyd. tread adj., fenders, wheel motor shields, ride control, 320/90R46 tires, rear tires are 90", 2,752 hrs., S/NN04700X002613
- Spra-Coupe 216, cab, 50' booms, 20" space, VW gas motor, 200 gal. poly tank, Melroe spray meter, electric boom height & tip lift, 12.5L-15 tires, 1,957 hrs.
- Spra-Coupe 216, cab, 50' booms, 20" space, VW gas motor, 200 gal. poly tank, Melroe spray meter, electric boom height & tip lift, foam markers, 12.5L-15 tires, 960 hrs.
- Flexi-Coil 65 pull-type sprayer, 120' boom, 1,000 gal. poly tank, PTO pump, windscreens
- Flexi-Coil 50 pull-type sprayer, 70' boom, 700 gal. poly tank, 2-way nozzles, hyd. pump
- Tridekon crop dividers, stainless steel, for 4700 sprayer

### CHEMICAL, FERTILIZER & NH3 EQUIPMENT

- Duo Lift tandem axle nurse trailer, 1,000 gal. poly tank, Honda 2" transfer pump w/GX160 motor, 15 gal. mix cone, 12.5L-15 tires
- Lindsay 1540 NH3 applicator, 40', 3-section fold, MicroTrak heat exchanger w/controller, electric bullet winch, rear hitch
- NH3 applicator, 26', 3 pt., electric nitrolator, hyd. fold wings, rear hitch
- 1,000 gal. NH3 tank, on running gear
- Flowserve PH6 chemical mini bulk pump, 12v
- Y-drop liquid fertilizer tubes, 24x30", for sprayer

### GRAIN HANDLING EQUIPMENT

- 2000 Brandt 1070 auger, 70'x10", swing hopper, XL low pro hopper w/12v electric hopper walker, electric hopper lift, 540 PTO, S/N80164
- Alloway GS15 loadout auger, 60'x8", 7-1/2 hp., electric motor, 1 phase, on transport
- Brandt loadout auger, 36'x7", 5 hp., 1 phase, electric motor, on transport
- Farm King jump auger, 12'x8", 5 hp., electric motor, 1 phase, on transport
- Hutchinson auger, 60'x8", no flighting, set up for grain vac
- Kwik Kleen 572 grain screener, 5-tube, (3) sets of screens, 5 hp., 1 phase electric motor, screening auger, S/N181
- Hutchinson rotary grain cleaner, electric motor, loading auger, extra screens
- Neuro Grain Vac 660, 1000 PTO, asst. tubes, S/N3245
- Drymor batch dryer, approx. 200 bu., 220v, 1 phase, propane burner, 4,573 hrs.

### SKID STEERS & ATTACHMENTS

- 1997 Bobcat 873 skid steer, diesel, OROPS, foot controls, aux. hyd., 72" bucket, manual quick tach, New axle, 12-16.5 tires, 3,296 hrs., \$5,000 work done less than 4 hrs. ago, S/N514113224
- 1989 Bobcat 642B skid steer, gas, OROPS, foot controls, 60" bucket, manual quick tach, 10-16.5 tires, 1,400 hrs., S/N504028467
- Bobcat pallet forks, 48", universal skid steer mounts
- Manure bucket, 60", universal skid steer mounts
- Manure bucket w/grapple, 60", universal skid steer mounts

### OTHER EQUIPMENT

- Haybuster H106 rock picker, 10' rake, S/N922358
- Summers reel type rock picker, hyd. drive, 3 bat reel, flotation tires
- Big Glen rock picker, fork style, hyd. dump
- Degelman rock rake, 15', pull-type, 540 PTO
- Ashland 45D dump scraper, 4-1/2 yd., S/N10753
- John Deere 115 blade, 3 pt., 6-way adj.
- Woods S106 ditch bank mower, 3 pt., 540 PTO, rebuilt gearbox & New blades
- John Deere 507 pull-type rotary mower, 7', 540 PTO
- John Deere 450 pull-type sickle mower, 9' bar, 540 PTO
- New Holland 258 hay rake, Roll-a-bar, ground drive
- Katolight 255i brushless generator, 25KW, 540 PTO, on 2-wheel trailer

### SHOP EQUIPMENT

- McTavish work bench, 10', (20) drawer, heavy duty, JD colors, New
- McTavish work bench, 12', (24) drawer, heavy duty, JD colors, New
- US General tool chest, (21) drawer main, (7) drawer side chest, on casters
- John Deere tool box, wedge shaped for truck box
- Eagle portable air compressor, gas, Honda GX160 motor, 12.5 CFM
- Pacific portable air compressor, gas, 208cc motor
- Hobart Beta Mig 250 wire welder, CV power
- Reiten Mfg. shop press, 3 hp., 1 phase, electric, approx. 60 ton cap.
- Shop Master metal bandsaw, coolant pump, 1 hp., 1 phase
- Smiths oxyacetylene torch set, regulators, tanks, hoses, tips & cart

### RECREATION & LAWN TRACTOR

- 1989 Misty Harbor pontoon, 18', Yamaha 150 ProV outboard motor, single axle bunk trailer, S/NJW100495D989
- John Deere 1420 front deck lawn mower, gas, hydro, 60", 7-iron deck, hyd. lift
- DR stump grinder, walk behind, Subaru 9.0 hp. gas motor, electric start
- MBW plate compactor, Honda 5.5 hp. motor

### POLY & PROPANE TANKS

- (4) 1,500 gal. poly tanks, 2" valve
- 500 gal. propane tank
- 250 gal. propane tank

### TIRES

- (2) Firestone 480/80R42 tires on 10-bolt hub duals at 90%
- (2) Firestone 480/80R42 tires, New
- (2) Goodyear 14.9-24 tires
- (4) Firestone 710/70R38 tires at 30% Asst. tires & rims

### PARTS & FARM SUPPORT ITEMS

- Degelman rock shaft for LR7645
- Farmall narrow front for M tractor
- Set of John Deere fenders for 4020
- Asst. 14" corrugated culverts
- (2) Corrugated culverts, 15'x36"
- Log chain, 23'x5/8"
- Header mover, 3 pt.
- Asst. parts for tillage, combines, tractors, planting, etc.
- Asst. shop equipment & tools

SteffesGroup.com

Steffes Group, Inc., 2000 Main Avenue East, West Fargo ND 58078 | 701.237.9173

Scott Steffes ND81, Brad Olstad ND319, Bob Steffes ND82, Max Steffes ND999, Ashley Huhn ND843, Eric Gabrielson ND890, Randy Kath ND894, Scott Gillespie ND1070, Shelly Weinzell ND963

TODD OSTENSON | 701.741.5163

or Tadd Skaurud at Steffes Group,  
 701.237.9173 or 701.729.3644



TERMS: All items sold as is where is. Payment of cash or check must be made sale day before removal of items. Statements made auction take precedence over all advertising. \$35 documentation fee applies to all titled vehicles. Titles will be mailed. Canadian buyers need a bank letter of credit to facilitate border transfer. REAL ESTATE TERMS: 10% down upon signing purchase agreement with balance due at closing in 45 days.